

# D. M. PICTON & CO., INC.

Contractors

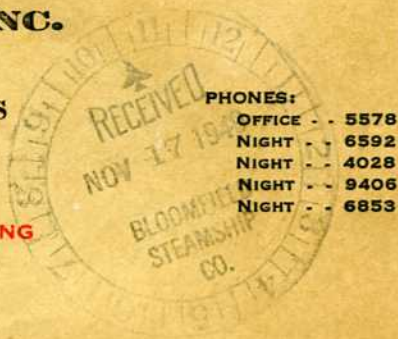
RIVER AND HARBOR IMPROVEMENTS

TUG BOATS-BARGES-DERRICK BARGES

**TOWAGE**

**HARBOR TOWING-INTRACOASTAL-GULF COAST TOWING**

J. H. PICTON, PRESIDENT  
C. T. PICTON, VICE-PRES.  
W. M. PICTON, VICE-PRES.  
E. B. PICTON, VICE-PRES.  
D. M. PICTON, JR., SEC. & TREAS.



603-04-05 ADAMS BUILDING

PORT ARTHUR, TEXAS

November 16, 1949

R. B. Wilkens Shipping Co.  
Cotton Exchange Bldg.  
Houston, Texas

Subject: Towage Contract - Sabine District - 1950

Attention: Mr. R. B. Wilkens

Dear Sirs:

We beg to advise that the Tugboat Harbor Tariff Rates for the Sabine District will remain the same in 1950 as they were in 1949. Discount of 10% allowed for Contract.

We enclose herewith original and one copy of the Tugboat Harbor Tariff and Contract Form for your consideration to cover all vessels under your Agency not otherwise bound.

We appreciate and thank you for the business given us the past many years, and with the Compliments of the Season, we are

Respectfully,

D. M. PICTON & CO., INC.

BY *W. M. Picton*  
Vice-President

WMP/gej  
Enclosures (2)

# PICTON TOW BOATS

**J. H. PICTON**  
*President*

**C. T. PICTON**  
*Vice-President*

**E. B. PICTON**  
*Vice-President*

**W. M. PICTON**  
*Vice-President*

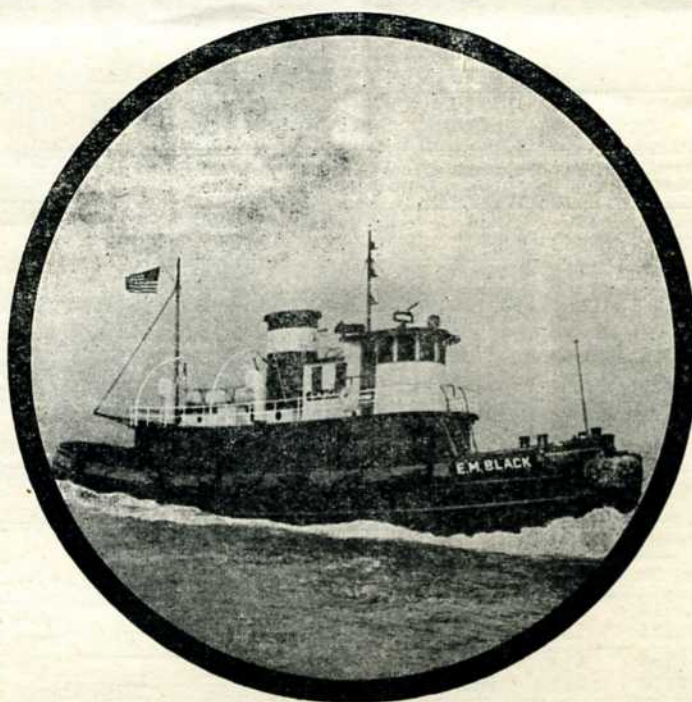
**M. W. STORMS**  
*Manager*  
PORT ARTHUR, TEXAS

CABLE ADDRESS  
"PICTO"  
PORT ARTHUR, U. S. A.

## Sabine District, U. S. A.

=====  
SABINE  
ENTRANCE

—  
SABINE  
PORT ARTHUR  
ATRECO  
PORT NECHES  
MAGPETCO  
MAGNOLIA  
BEAUMONT  
=====



=====  
CALCASIEU  
ENTRANCE

—  
CAMERON  
HAYMARK  
LOCKPORT  
UNION SULPHUR  
BURTON  
CONOCO  
LAKE CHARLES  
=====

Harbor Towing — Intracoastal — Gulf Coast Towing  
Oil Lightering — Deck Barges  
Floating Derricks

——  
**D. M. PICTON & CO., INC.**

603-4 ADAMS BUILDING  
PORT ARTHUR, TEXAS  
U. S. A.

TUG CALLS:    LONG    LONG    SHORT    LONG

# TUGBOAT HARBOR TARIFF

# RATES FOR ONE TUG TOWING ONE VESSEL

# SABINE DISTRICT

	Lake Charles	Orange	Penn. Shipyards	Beaumont	Stano-lind	Smith Bluff	Magpetco	Port Neches	Atreco	Port Arthur	Sabine	Sabine Ent.
SABINE ENT. Light	\$570	430	480	430	430	310	310	310	310	190	150	
With Cargo	\$630	475	525	475	475	395	395	395	395	220	170	
SABINE Light	\$570	430	480	430	430	310	310	310	310	190		150
With Cargo	\$630	475	525	475	475	395	395	395	395	220		170
PORT ART'R Light	\$430	275	325	275	275	235	235	235	235		190	190
With Cargo	\$475	310	360	310	310	275	275	275	275		220	220
ATRECO Light	\$430	235	285	235	235	235	235	235		235	310	310
With Cargo	\$475	300	350	300	300	275	275	275		275	395	395
PORT NECH'S Light	\$505	235	285	235	235	235	235		235	235	310	310
With Cargo	\$550	300	350	300	300	275	275		275	275	395	395
MAGPETCO Light	\$505	235	285	235	235	235		235	235	235	310	310
With Cargo	\$550	300	350	300	300	275		275	275	275	395	395
SMITH BLUFF Light	\$505	235	285	235	235		235	235	235	235	310	310
With Cargo	\$550	300	350	300	300		275	275	275	275	395	395
STANO-LIND Light	\$570	430	285	235		235	235	235	235	275	430	430
With Cargo	\$630	475	325	275		300	300	300	300	310	475	475
BEAUMONT Light	\$570	430	200		235	235	235	235	235	275	430	430
With Cargo	\$630	475	235		275	300	300	300	300	310	475	475
PENNSYLV. S'Y.RD Light	\$620	480		200	285	285	285	285	285	325	480	480
With Cargo	\$680	525		235	325	350	350	350	350	360	525	525
ORANGE Light	\$430		480	430	430	235	235	235	235	275	430	430
With Cargo	\$475		525	475	475	300	300	300	300	310	475	475
LAKE CHA'S Light	\$	430	620	570	570	505	505	505	430	430	570	570
With Cargo	\$	475	680	630	630	550	550	550	475	475	630	630

(Lake Charles District)	Rose Bluff	Clifton Ridge	Haymark	Conoco Oil Co.	City Docks	West Lake
CALCASIEU	\$310	310	310	430	430	570
ENTRANCE With Cargo	\$395	395	395	475	475	650
ROSE BLUFF Light	\$	115	115	150	150	260
With Cargo	\$	135	135	170	170	310
CLIFTON RIDGE Light	\$115		115	150	150	260
With Cargo	\$135		135	170	170	310
HAYMARK Light	\$115	115		150	150	275
With Cargo	\$135	135		170	170	345
CONOCO OIL CO. Light	\$150	150	150		115	260
With Cargo	\$170	170	170		135	310
CITY DOCKS Light	\$150	150	150	115		260
With Cargo	\$170	170	170	135		310

## SPECIAL RATE

### INTRACOASTAL BARGES

SHIFTING one Barge Tariff less 70%  
 Each Additional Barge Plus 50% of 1st Barge.  
 TOWING—1 Barge Tariff Less 60%  
 Each Additional Barge Plus 50% of 1st Barge.

## SHIFTING

	Elevator or Meal Dock	Mexican or Coke Dock	Gulf Dock	Texas Dock
TEXAS DOCK Light	\$115	115	135	115
With Cargo	\$135	135	170	135
GULF DOCK Light	\$135	115	115	135
With Cargo	\$170	135	135	170
MEXICAN OR COKE DOCK Light	\$115	115	115	115
With Cargo	\$135	135	135	135
ELEVATOR OR MEAL DOCK Light	\$115	115	135	115
With Cargo	\$135	135	170	135
INTERSECTION OF SAB.-NECH'S & P. A. SHIP CANALS Light	\$115	115	135	115
With Cargo	\$135	135	170	135

## SHIFTING

	Dock Municipal	Magnolia Docks	Penn. Shipyards
PENN. SHIPYARDS Light	\$200	200	115
With Cargo	\$235	235	135
MAGNOLIA DOCK Light	\$135	115	200
With Cargo	\$170	135	235
MUNICIPAL DOCK Light	\$115	135	200
With Cargo	\$135	170	235

SHIFTING DEAD VESSEL — Tariff Plus \$40.00  
 TOWING DEAD VESSEL — Tariff Plus 35%

Assisting Vessels Turning at Beaumont and to Magnolia Dock—Light	\$135.00	With Cargo	\$170
Assisting Vessel Shifting Berth to Berth at Same Dock — Light	\$115.00	With Cargo	\$135
Docking and Undocking Vessels — Light	\$110.00	With Cargo	\$125

## OCEAN, COASTWISE BARGES—TOWING RATES

### ONE TUG

4,000 Gross Tons and over	Ship Rate
3,000 to 4,000 Gross Tons	Ship Rate Less 10%
1,500 to 3,000 Gross Tons	Ship Rate Less 20%
1,000 to 1,500 Gross Tons	Ship Rate Less 30%
Under 1,000 Gross Tons	Ship Rate Less 35%
Shifting, Docking and Undocking	Ship Rate Less 10%
Emergency Towage	Ship Rate

## EMERGENCY TOWAGE

When tug not engaged in towing and is called to render assistance to a vessel, the charge for this type of service will be \$135.00 for the first hour and \$65.00 for every hour or fraction thereof; time starts when tug leaves from the point where she then is and time stop when tug arrives back at Port Arthur, Texas.

## FURNISHING STEAM

Furnishing steam to vessels from tugs a charge of \$45.00 per hour or fractional part thereof, including running time of tug to and from the vessel. A minimum charge of \$70.00 for steam will be made.

**SABINE DISTRICT SPECIAL SERVICES—SPECIAL ROUND TRIP RATES TUG WITHOUT TOW.**

1. Between Sabine and Sabine Entrance .....	\$130.00	6. Between—	Lake Charles, La.	} \$430.00
2. Between Port Arthur and Sabine Entrance .....	\$155.00	Beaumont, Texas	or	
3. Between Port Arthur and Beaumont or Stanolind .....	\$280.00	Port Arthur, Texas	Calcasieu Entrance,	
4. Between Port Arthur and Orange .....	\$280.00	Orange, Texas	Louisiana	
5. Between Port Arthur and Port Neches, or Atreco, or Magpetco, or Smith's Bluff .....	\$180.00	7. Between Lake Charles, La., and Calcasieu Entrance, La. ....		\$280.00
		8. In connection with these round trip rates, one hour free waiting time is allowed. For waiting time thereafter a charge will be made of \$27.00 per hour or fraction thereof.		

**DELAY TIME**

The rates set out in Tariff are based upon voyages to be completed within the time specified below. If a voyage is not completed within specified time, the tug or tugs shall be compensated additionally after such expiration at the rate of \$27.00 per hour per tug continuously until the voyage is completed.

1. Between Beaumont or Stanolind and Sabine or Sabine Entrance, 14 hours allowed for voyage.
2. Between Smith's Bluff or Magpetco, or Port Neches, or Atreco, or Humble and Port Arthur, 6 hours allowed for voyage.
3. Between Port Arthur and Sabine or Sabine Entrance 6 hours allowed for voyage.
4. Between Sabine and Sabine Entrance, 3 hours allowed for voyage.
5. Between Orange and Sabine or Sabine Entrance, 14 hours allowed for voyage.
6. Between Beaumont, or Stanolind, or Orange and Port Arthur, 10 hours allowed for voyage.
7. Between Smiths Bluff, or Magpetco, or Port Neches, or Atreco, or Humble and Sabine or Sabine Entrance, 10 hours allowed for voyage.
8. Between Smiths Bluff or Humble and Intermediate docks, 4 hours allowed for voyage.
9. Between Louisiana ports and any Texas ports excepting Orange, 20 hours allowed for voyage.
10. Between Lake Charles and Orange, 12 hours allowed for voyage.
11. Between Lake Charles, La., and Calcasieu Entrance, 12 hours allowed for voyage.

**CONDITIONS RELATING TO SABINE DISTRICT TOWAGE, SHIFTING AND DOCKING RATES**

1. When tug ordered to report for a towing, shifting or docking service one and one-half hour's free waiting time will be given; a charge of \$30.00 will be made for every hour or fraction of waiting time thereafter. No unused free waiting time shall be added to voyage time.
2. On all towage of vessels leaving Beaumont, Orange, Neches River terminals, Lake Charles, La., or Port Arthur or Intermediate points and taking cargo or bunkers at Sabine or Sabine Pass on outward voyage, a combination of rates "To Sabine" and "Sabine to Sabine Entrance" apply.
3. Tug boats shall be ordered at least 12 hours in advance of sailing, and if tugs report and ship does not sail, ship shall pay the rate for towing of light ship from Port Arthur.
4. All vessels towed, shifted or docked shall furnish necessary towing hawsers and lines.
5. No vessel will be towed, shifted or docked unless its Master or Pilot is in charge. Tugs do not furnish pilotage but simply furnish their power under orders or direction of the Master, or pilot of the vessel towed, shifted or docked.
6. All charges net, except when services are performed under contract, then a discount of 10% is to apply on all tariff rates.
7. This Tariff to Become Effective October 1, 1946.

**DISTANCES FROM WHISTLING BUOY**

Whistle Buoy		Union Sulphur Dock .....	71.5
Sabine Entrance .....	0.0	Cities Service Oil Dock .....	72.4
Sabine .....	6.8	Burton Docks .....	72.5
Port Arthur Canal .....	9.9	Conoco Docks .....	76.0
Sabine Neches Canal .....	16.2	Pure Oil Docks .....	76.0
Texas Company Docks .....	16.8	Lake Charles Docks .....	77.3
Gulf Refining Co. Docks .....	18.0	Kelly-Weber Docks .....	79.3
Port Arthur Bridge .....	19.9		
Locks .....	25.9	Whistle Buoy	
Neches River .....	28.3	Calcasieu Entrance .....	0.0
Atreco Docks .....	30.3	Haymark Shell Oil Co. Dock .....	27.5
Port Neches Docks .....	34.3	Magnolia Dock .....	32.0
Magpetco Docks .....	35.7	Union Sulphur Dock .....	32.1
Smiths Bluff Docks .....	37.3	Cities Service Oil Dock .....	32.4
Stanolind Docks .....	44.4	Burton Dock .....	33.0
Magnolia Docks .....	49.1	Pure Oil Dock .....	41.0
Beaumont City Docks .....	49.7	Conoco Oil Dock .....	41.0
Sabine River .....	32.3	Lake Charles Docks .....	40.0
Orange City Docks .....	39.5	Kelly-Weber Dock .....	42.00
Lake Charles Ship Canal .....	39.3	Beaumont, Texas .....	81.0
Haymark Docks .....	68.0	Port Arthur, Texas .....	71.8
Magnolia Lockport Dock .....	71.8	Sabine Entrance Sea Buoy .....	87.8

THE ABOVE TABLE OF DISTANCES IS SUBSTANTIALLY CORRECT.

